



STEEL CUTT'G, FOAM'G, BEND'G, BEVEL'G, SUB-ASSEMBLY ETC.

2014.9.1.

# COMPANY PROFILE



# SEWON S&P CO.,LTD.

Head office & plant:  
47, churyongsanup-2gil, Onsan-eup, Ulju-gun,

Sub assembly plant:  
2, Hwasan-1gil, Onsan-eup, Ulju-gun,  
Ulsan, Korea.



## Table of contents

- Table of contents	1
- SEWON S&P Overview	2
- Introduction	3-4
- History of company	5
- Organization chart	6
- Message from the CEO	7
- Process of Production	8
- Factory LAY-OUT , Workplace & machine	9-16
- Quality Planning	17
- Sales results	18
- Status of major trading partners	19
- Services offered for partners	20
- By Location	21
- Certification	22-26

## Overview

- ◆ Company Name : **SEWON S&P CO., Ltd.**
- ◆ C E O : Mr. HyunSik, MUN
- ◆ Main-office & plant
  - 47, Churyongsanup-2gil, Onsan-eup, Ulju-gun, Ulsan, Korea
  - Tel)+82-52-257-4081-3 Fax)+82-505-504-4082
- ◆ Sub assembly plant
  - 2,hwasan-1gil, Onsan-eup, Ulju-gun, Ulsan, Korea
- ◆ Number of Employees : 123
- ◆ e-mail ; [snp01907@naver.com](mailto:snp01907@naver.com)
- ◆ Major Products
  - Steel Cutting, Foaming, Bending, Beveling, Sub-Assembly, Funnel
  - Water Break, Rader master, LT block assembly etc.

## Introduction

### Motto

**장 은 ( 匠 魂, Craftsmanship )   창조 ( 創 造, Creation )   소통 ( 疏 通, Communication )**

### Management Philosophy

**Human Resource Development,   Pusuit of Happiness**

### Management Objectives

Compliance with the basic principles .   Perfect quality

## Promotion Strategy

### Reponsibility

- Production management system,--->imperfect achieve 0%
- Enhanced customer care(Immediate service)
- All employees of quality manager
- Daliy life of 3L 5S

### Improve Productivity

- Achieve defect 100 PPM
- 365 days to achieve zero accident
- Productivity Movement(10%/1year)
- Vocational training of employees periodic

### Emphasis on field

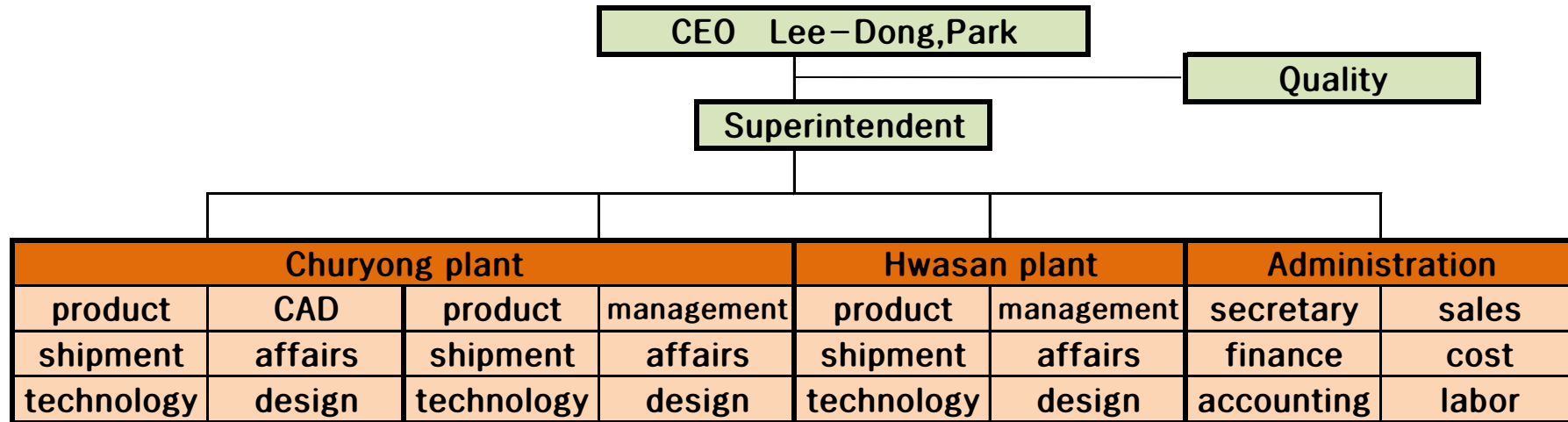
- Promoting diversified production(Cutting->moulding->Assembly)
- Minimize claims

## History

- 2010. 03. 15. Established SEWON S&P CO., Ltd(Capital Stock:US\$1,000,000)
- 03. 19. Business Registration(Tax office in Ulsan city/Metal processors)
- 04. 16. Factory Area Agreement (20,496 m<sup>2</sup>)
- 07. 23. Building License of Plant and Facilities( 5,683.04 m<sup>2</sup>)
- 12. 20. Accredited by Certification : ISO9001:2008(NCS)
  
- 2011. 05. 31. 30t gantry crane & steel construction yard(1,470 m<sup>2</sup>)
- 12. 20. Accredited by Certifiaction:ISO9001:2008  
(MSA;Add welding certification acquired)
  
- 2013. 01. Complete sub–assembly plant.
- 05. WPS (certificate).
- 12. Equity capital (capital: \$3,000,000 ).
  
- 2014. 09. Complete LPG assembly plant.



# Organization Chart



# Personel

division	admin.	manage	CAD	POP	GOP	mount'g	weld'g	auxiliary	crane	fork lift	foam'g	RC	bevel'g	output	affairs	quality	ammount
administration	12																12
cutt'g product1		4	3	10	2		2	4	3	1	1	3	7	4	2	1	47
assembly product2		3				20	30	4	3	1				1	1	1	64
ammount	12	7	3	10	2	20	32	8	6	2	1	3	7	5	3	2	123



Message from the CEO

Cornerstone in the field of shipbuilding production pushes the foundation.

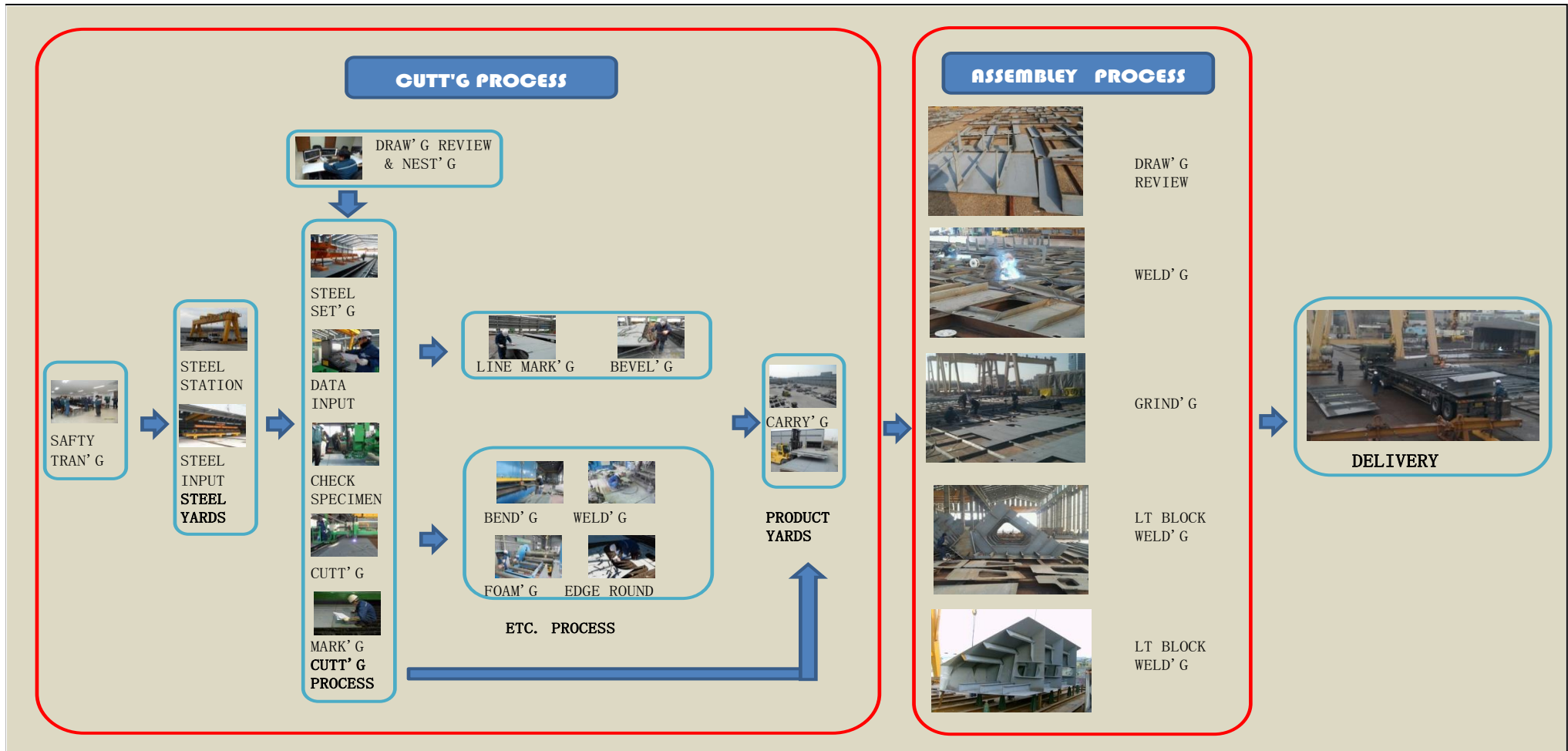
**SEWON S & P co., ltd. was established in 2010 after the region's shipbuilding industry in Ulsan cutting, foaming, bending, beveling, sub-assembly and L/T block the production company.**

**SEWON in the field of shipbuilding and plant on the basis of the highest quality and safety first demonstrate the high level of technology, to satisfy the customer at no cost.**

**Always seeking a higher value of the future, and do not remain current high level of development one step further to show you a look promises.**



Process



**LAY OUT**

<b>address</b>	<b>47,churongsanup-2gil, Onsan-eup,Ulju-gun,Ulsan</b>
<b>product</b>	<b>steel cutt'g, foam'g, bend'g, rc, bevel'g</b>
<b>land area</b>	<b>20496 m<sup>2</sup></b>
<b>build'g area</b>	<b>15468 m<sup>2</sup></b>



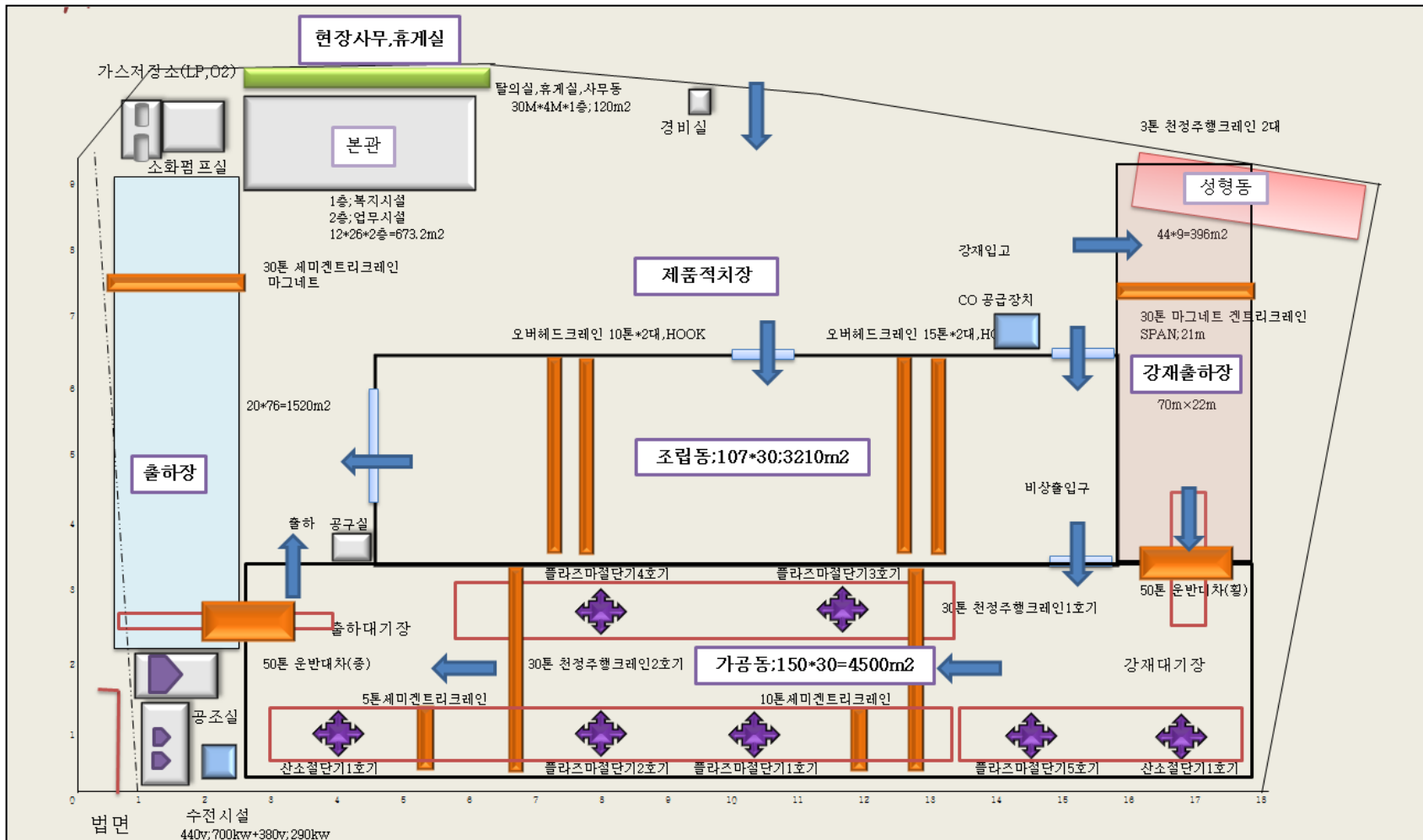
<b>address</b>	<b>2,Hwasan-1gil,Onsan-eup, Ulju-gun, Ulsan</b>
<b>product</b>	<b>cabin-sub assembly</b>
<b>land area</b>	<b>7260 m<sup>2</sup></b>
<b>build'g area</b>	<b>3663 m<sup>2</sup></b>



Head office & Cutt'g plant(Churyong)



LAY OUT



**Building(cutting & sub assembly)**

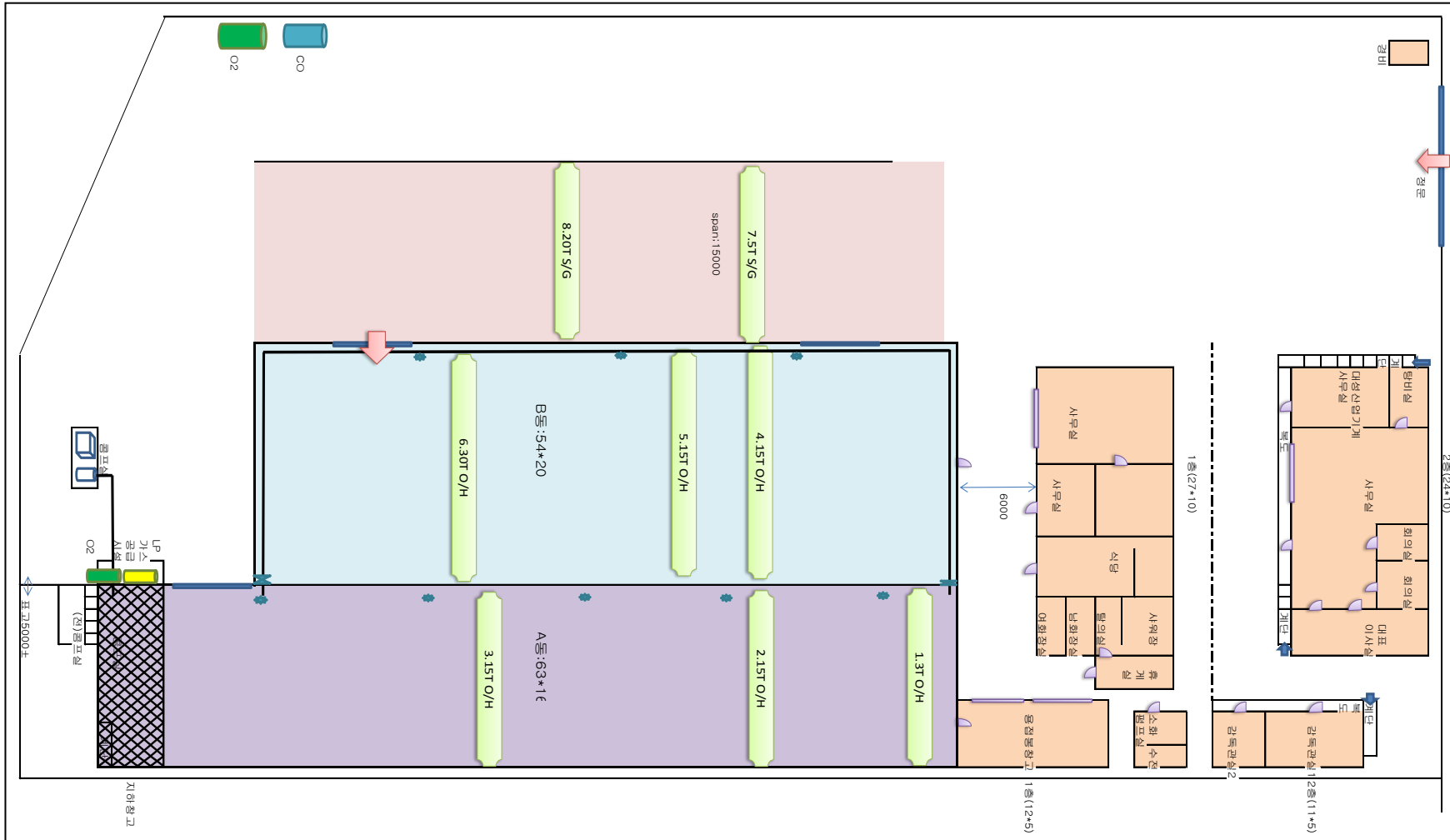

Division	area	remark
Cutt'g workshop	4,452.84 m <sup>2</sup>	12.2010 Completion
Foam'g workshop	506.00 m <sup>2</sup>	1.2011 Completion
assembly workshop	3,210.00 m <sup>2</sup>	9.2014 Completion
Office	673.20 m <sup>2</sup>	1.2011 Completion
Pump room	77.00 m <sup>2</sup>	12.2010 Completion
Gas room	24.00 m <sup>2</sup>	12.2010 Completion
Air room	70.00 m <sup>2</sup>	12.2010 Completion
Guardroom	9.00 m <sup>2</sup>	12.2010 Completion
electric room	25.00 m <sup>2</sup>	12.2010 Completion
steel Yard 1	1,540.00 m <sup>2</sup>	5.2011 Completion
steel Yard 2	1,520.00 m <sup>2</sup>	7.2014 Completion
Dorm	400.00 m <sup>2</sup>	Expansion plans
<b>Subtotal</b>	<b>12,168.04 m<sup>2</sup></b>	

Cabin;sub assembly(Hwasan)





# LAY OUT



**Building**


Division	area	remark
assembly workshop "A"	1,008.0 m <sup>2</sup>	
assembly workshop "B"	1,080.0 m <sup>2</sup>	
Warehouse	80.0 m <sup>2</sup>	
Yards	750.0 m <sup>2</sup>	
Warehouse(welding)	60.0 m <sup>2</sup>	
office	510.0 m <sup>2</sup>	
Director's office	60.0 m <sup>2</sup>	
Gas room	50.0 m <sup>2</sup>	CO 4.9tons
electric room	50.0 m <sup>2</sup>	380V 300KW
Air room	15.0 m <sup>2</sup>	100HP
<b>Subtotal</b>	<b>3,663.0 m<sup>2</sup></b>	



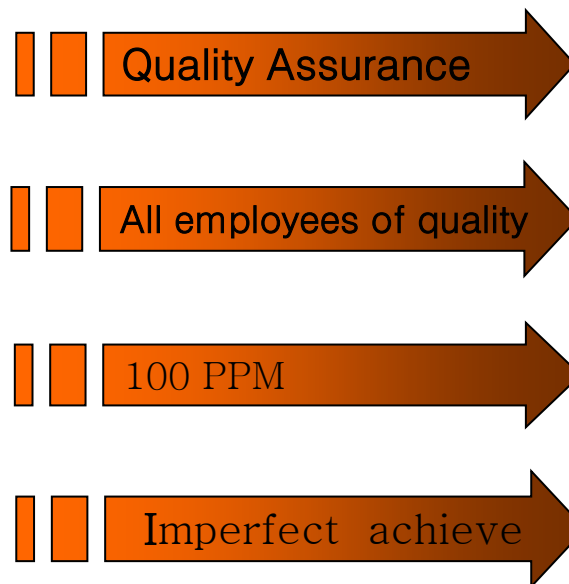


**Equipment**

plant	machine name	spec	dim's		qtt'	capa tons/month	day	company	remark
			thickness	width					
1plant (churyong)	Gas cutt'g m/c	LEAD GRAPH 6000C	6-150	5m*40m	2	500	11.2010	KOIKE	FLAME PLANER
	Plasma cutt'g m/c	VERSAGRAPH 6000DXI	4.5-45	5m*50m	4	1500	11.2010	KOIKE	BEVEL TYPE
	Plasma cutt'g m/c	VERSAGRAPH 6000CIP	4.5-45	5m*50m	1	1500	5.2011	KOIKE	I CUT'G TYPE
	Crane	Over head(15+15t)		SPAN 30m	2		11.2010	kyungdong	Rotation MAGNET
	Crane	Semi gantry(10t)		SPAN 12m	1		11.2010	kyungdong	Rotation MAGNET
	Crane	Semi gantry(5t)		SPAN 12m	2		11.2010	kyungdong	Rotation MAGNET
	Crane	Over head(15+15t)		SPAN 9m	2		11.2010	kyungdong	HOOK TYPE
	Crane	Gantry(15+15t)		SPAN 21m	1		4.2011	kyungdong	Fixed MAGNET
	Crane	Semi gantry(15+15t)		SPAN 20m	1		7.2012	kyungdong	Fixed MAGNET
	Crane	Semi gantry(3t)		SPAN 9m	2		7.2012	kyungdong	HOOK TYPE
	Compressor	Screw 75kw			2		11.2010	A PLUS	
	Bend'g m/c	NCB50050		500tons*5000mm	1	700	11.2010	kookdo	
	Roll press	GHRB2520		25t*2100mm(120tons)	1	1000	12.2010	kookdo	
	Edge round m/c	UC500		2.2tons*B;760mm	1		5.2011	youchang	
	Co weld'g m/c	600C			80		8.2008	daehan	
	Arc weld'g m/c	600A			2		8.2008	daehan	
	Auto weld'g m/c				4		8.2008	daehan	
	Flux dry m/c				1		8.2008	daehan	
	Crane	Gantry(15+10t)		W=30m, H=24m	4		8.2008	IM	
	Crane	Gantry(15t)		W=30m, H=14m	2		8.2008	IM	
	Crane	Gantry(10t)		W=8m, H=5m	2		8.2008	IM	
	Compressor	SCREW 75kw			5		8.2008	A PLUS	
	2plant (hwasan)	Co weld'g m/c	600C			40		2.2014	jaewoo
Arc weld'g m/c		600A			2		2.2014	jaewoo	
Auto weld'g m/c					2		2.2014	jaewoo	
Flux dry m/c					1		8.2008	jaewoo	
Crane		Over head(15t)		W=20m, H=8.5m	2		8.2008	myungsung	
Crane		Over head(15t)		W=16m, H=8.5m	2		8.2008	myungsung	
Crane		Over head(30t)		W=20m, H=8.5m	1		8.2008	myungsung	
Crane		Over head(5t)		W=16m, H=8.5m	1		8.2008	myungsung	
Crane		Semi gantry(5t)		W=15m, H=8.5m	1		8.2008	myungsung	
Crane		Semi gantry(20t)		W=15m, H=8.5m	1		8.2008	myungsung	
common	COMPRESSOR	SCREW 30kw			1		8.2008	A PLUS	
	Fork lift			7tons	2		11.2010	hyundai	
	Fork lift			15tons	2		11.2010	hyundai	
	truck			5tons	2		7.2012	hyundai	
	trailer			1tons	2		7.2012	hyundai	
				25tons	6				

## Quality Planning

- **Cutting Process:** the quality of the block is the key process
- **Customers' quality:** Early to avoid complaints and Improvement of the quality for our customer's



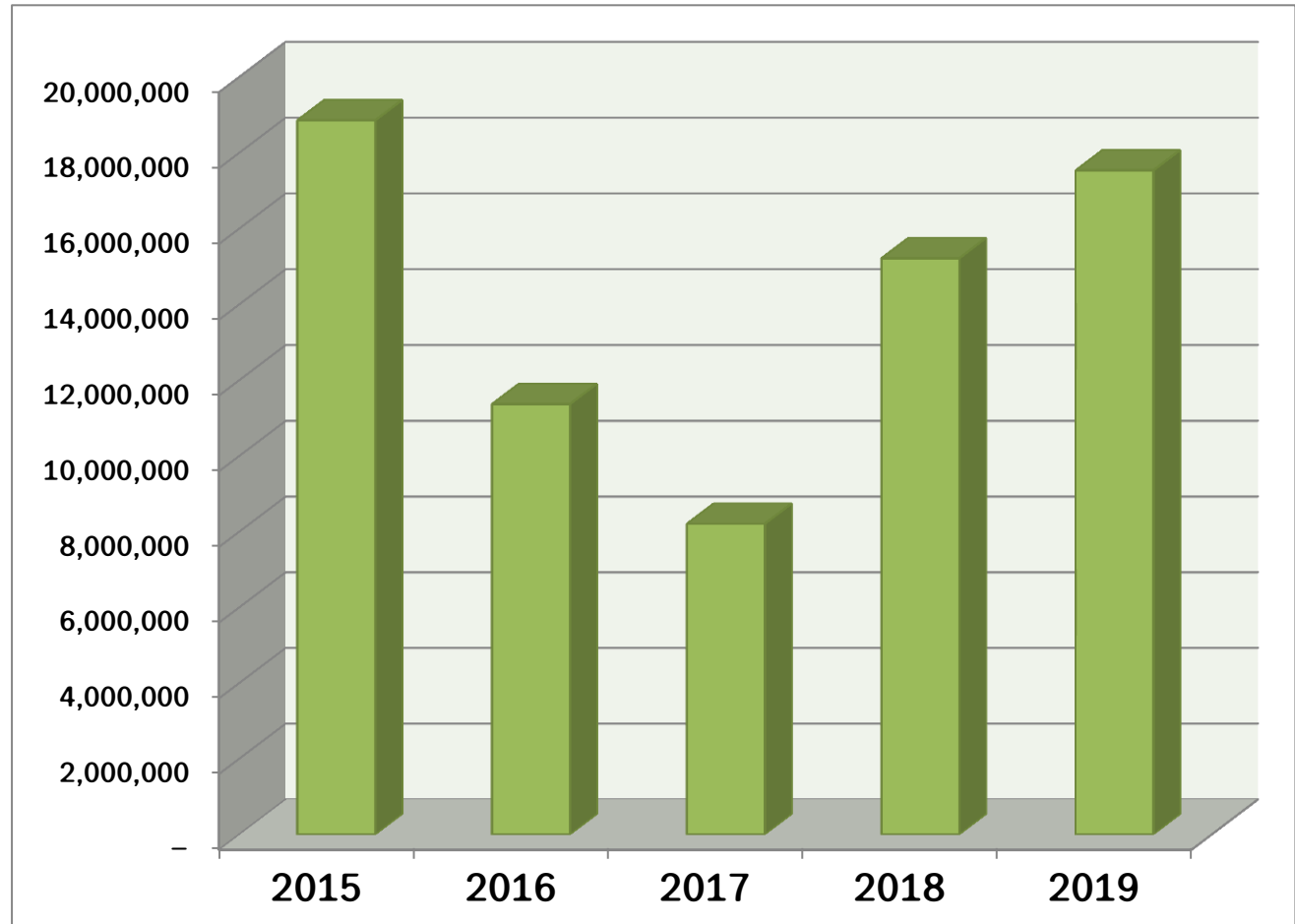
- B 2 B & relationship
- Periodic quality education : All employees
- Quality issues : Posted in Board
- TBM(Tool Box Meet'g)
- Consistent Process Services
- Stock management enhanced
- R/C process-Automatic edge round'g m/c
- 100 PPM: Customized products pile dividing
- Stock management:each BLK/ LOT
- Early process : perfect quality



## Sales Results

Year	Sales
2015	18,860,000
2016	11,374,000
2017	8,210,000
2018	15,222,000
2019	17,540,000

(Unit;US\$)





Status of major trading partners



## Services Offered for Partners

SEWON S&P CO.,. LTD.

- Quality Improvement  
(Investment of Automatic M/C)
- Quality Assurance system
- 100 PPM
- Realize the unification of parts production

CUSTOMER'S

- Increase productivity by improving the quality
- Reduced of additional action
- JUST IN TIME (Increased workshops, Maximizes the efficiency of plant)
- Sharing quality issues (formed of partnership)
- Customer's strength; Concentrate

Win

Win

progress

By Location





( 1 / 1 )



발급번호 Issuance number	9717-779-8332-062	처리기간 Processing time	즉시 Immediately
사업자등록증명 Certificate of Business Registration (법인사업자) (Corporate Taxpayer)			
상호(법인명) Name of company	주식회사 세원에스앤피 SEWON S&P CO., LTD.		
사업자등록번호 Business registration number	610-86-01907		
성명(대표자) Name of representative	문현식의 1명 HyunSik MUN and 1 other		
주민(법인)등록번호 Resident(Corporation) registration number	230111-0163780		
사업장소재지 Business Address	울산광역시 울주군 은산읍 처용산업2길 47 47, Cheoyongsaneop 2-gil, Onsan-eup, Ulju-gun, Ulsan, Republic of Korea		
개업일 Date of business commencement	2010년(Year) 03월(Month) 19일(Day)		
사업자등록일 Date of business registration	2010년(Year) 03월(Month) 19일(Day)		
업종 Business type	제조업/제조업 Manufacturing/Manufacturing		
종목 Business item	선박철구조물 Manufacture of metal frameworks or skeletons for marine structure and parts thereof 도장, 소팅 Manufacture of coated, plated, coloured and other processed steel products		
공동사업자 Joint business owner	해당사항 없습니다 (No Data)		

위와 같이 증명합니다.

I certify that above information is true and correct to the best of my knowledge and belief.  
※ 위 내용은 발급일 현재 상황으로서 추후 변경될 수 있습니다.  
This information is true as of the issuance date of this certification and but maybe subject to change in the future.

접수번호 Receipt No.	502068169721	2020년 10월 21일 Year Month Day	
담당부서 Department	민원봉사실 Taxpayer Service Center		
담당자 Staff in Charge	정혜경 jeong hae kyung	울산세무서장 (인) Head of Ulsan District Tax Office	
연락처 Telephone No.	+082-52-259-0226		



- \* 본 증명서의 위·변조 여부는 발급일로부터 90일 이내 「국세청 홈택스(www.hometax.go.kr) 또는 모바일 홈택스 > 민원증명(증명발급) > 민원증명 원본확인」에서 발급번호로 확인, 또는 문서 하단의 바코드로 확인이 가능합니다. (공문서를 위·변조하거나 행사한 자는 10년 이하의 징역에 처할 수 있습니다.)
- \* 본 증명서 홈택스(www.hometax.go.kr)에서 대인 온라인 서비스를 통해 발급된 증명서입니다.

( 1 / 1 )



발급번호 Issuance number	7657-964-7329-185	처리기간 Processing time	즉시 Immediately
사업자등록증명 Certificate of Business Registration (법인사업자) (Corporate Taxpayer)			
상호(법인명) Name of company	주식회사 세원에스앤피 SEWON S&P CO., LTD.		
사업자등록번호 Business registration number	610-85-45102		
성명(대표자) Name of representative	문현식의 1명 HyunSik MUN and 1 other		
주민(법인)등록번호 Resident(Corporation) registration number	230111-0163780		
사업장소재지 Business Address	울산광역시 동구 방어진순환도로 700(일산동) 700, Bangeojinsunhwando-ro, Dong-gu, Ulsan, Republic of Korea		
개업일 Date of business commencement	2013년(Year) 01월(Month) 01일(Day)		
사업자등록일 Date of business registration	2013년(Year) 01월(Month) 07일(Day)		
업종 Business type	제조업/제조업 Manufacturing/Manufacturing		
종목 Business item	금속가공 제품, 선박철구조물 Manufacture of metal frameworks or skeletons for marine structure and parts thereof 도장, 소팅 Manufacture of coated, plated, coloured and other processed steel products		
공동사업자 Joint business owner	해당사항 없습니다 (No Data)		

위와 같이 증명합니다.

I certify that above information is true and correct to the best of my knowledge and belief.  
※ 위 내용은 발급일 현재 상황으로서 추후 변경될 수 있습니다.  
This information is true as of the issuance date of this certification and but maybe subject to change in the future.

접수번호 Receipt No.	502068183882	2020년 10월 21일 Year Month Day	
담당부서 Department	민원봉사실 Taxpayer Service Center		
담당자 Staff in Charge	김도연 kim do yeon	동울산세무서장 (인) Head of Dong-ulsan District Tax Office	
연락처 Telephone No.	+082-52-219-9225		



- \* 본 증명서의 위·변조 여부는 발급일로부터 90일 이내 「국세청 홈택스(www.hometax.go.kr) 또는 모바일 홈택스 > 민원증명(증명발급) > 민원증명 원본확인」에서 발급번호로 확인, 또는 문서 하단의 바코드로 확인이 가능합니다. (공문서를 위·변조하거나 행사한 자는 10년 이하의 징역에 처할 수 있습니다.)
- \* 본 증명서 홈택스(www.hometax.go.kr)에서 대인 온라인 서비스를 통해 발급된 증명서입니다.



# GERMAN CERT

Quality Management System Certificate

## SEWON S&P Co., Ltd.

3B-3L New General Industrial Complex Cheoyong-ri, Onsan-eup, Ulju-gun, Ulsan, Korea

German Cert Co., Ltd. Hereby certifies that the Quality Management System of the above organization has been evaluated and found to be in line with the requirements of the following standard:

**ISO 9001:2008**

For the scope of

**Design, Manufacture and Service of Steel Processing (Steel Material Cutting, Moulding and Welding)**

Certificate Number : **KorQ-119961**

Certificate Valid Until : **20 December 2013 ~ 19 December 2016**

Initial Certification Date : 20 December 2010

GC Certification Date : 20 December 2013 (Rev. 1-A)

Certification Expiry Date : 19 December 2016

Scheme Manager



10F, Jeongwoo Bldg, Yeosido-dong, Euihaeng-ro 29, Yeongdeungpo-gu, Seoul 150-739, Korea  
This certificate is a sole property of GERMAN CERT and therefore shall be returned to it upon its request. (Rev.4)



# GERMAN CERT

Quality Management System Certificate

## (주)세원에스엔피

울산광역시 울주군 온산읍 처용리 신일반산업단지 3B-3L

저면서트 주식회사는 위 회사의 심사규격과 인증범위가 아래의 품질경영시스템 요구사항을 모두 충족하고 있음을 검증하고 인증 등록을 승인하였습니다.

심사규격

**ISO 9001:2008**

인증범위

금속가공(강재절단, 성형 및 용접)의 설계, 제조 및 부가서비스

인증번호 : **KorQ-119961**

인증서 유효기간 : 2013년 12월 20일 ~ 2016년 12월 19일

최초 인증일 : 2010년 12월 20일

인증 승인일 : 2013년 12월 20일 (Rev. 1-A)

인증 만료일 : 2016년 12월 19일

Scheme Manager



10F, Jeongwoo Bldg, Yeosido-dong, Euihaeng-ro 29, Yeongdeungpo-gu, Seoul 150-739, Korea  
This certificate is a sole property of GERMAN CERT and therefore shall be returned to it upon its request. (Rev.4)





# GERMAN CERT

Quality Management System Certificate

**Sewon S&P Co., Ltd.**

#292 Jangsaenggogoro-ro, Nam-gu, Ulsan, Korea

German Cert Co., Ltd. hereby certifies that the Quality Management System of the above organization has been evaluated and found to be in line with the requirements of the following standard:

**ISO 9001:2008**  
(Excluding Clause: 7.3 Design & Development)

For the scope of

**Manufacture and Service of Ship Block Assembly, Ship Block Painting**

Certificate Number : **KorQ-132402**

Certificate Valid Until : **31 December 2013 - 30 December 2016**

Initial Certification Date : **31 December 2013**

QC Certification Date : **31 December 2013**

Certification Expiry Date : **30 December 2016**

GERMAN CERT  
QUALITY MANAGEMENT SYSTEM

Scheme Manager



ISO, Jangsaeng-Myeong, Namdo-dong, Nam-gu, Ulsan, Korea  
This certificate is a sole property of GERMAN CERT and therefore shall be returned to it upon its request. (Rev. 0)



# GERMAN CERT

Quality Management System Certificate

**(주)세원에스엔피 (매암공장)**

울산광역시 남구 장생포로대로 292

개편으로 추진되는 위 회사의 심사규격과 인증범위가 아래의 품질경영시스템 요구사항을 모두 충족하고 있음을 검증하고 인증 등록을 승인하였습니다.

심사규격

**ISO 9001:2008**  
(개용 제외: 7.3 설계 및 개발)

인증범위

선박 BLOCK조립, 도장 및 부가서비스

인증번호 : **KorQ-132402**

인증서 유효기간 : **2013년 12월 31일 - 2016년 12월 30일**

최초 인증일 : **2013년 12월 31일**

인증 승인일 : **2013년 12월 31일**

인증 만료일 : **2016년 12월 30일**

GERMAN CERT  
QUALITY MANAGEMENT SYSTEM

Scheme Manager



ISO, Jangsaeng-Myeong, Namdo-dong, Nam-gu, Ulsan, Korea  
This certificate is a sole property of GERMAN CERT and therefore shall be returned to it upon its request. (Rev. 0)



# W. P. S. & P. Q. R. LIST UP

Date.	2013-11-22
Prepared By	J. H. JEONG
Approved By	I. T. KIM

## WPS & PQR INDEX / HULL STRUCTURE(Flux Cored Arc Welding/Submerged Arc Welding)

NO.	Process	NO.	WPS NO.	PQR NO.	BASE METAL FILLER METAL	TEST Thick'	Thick' Range	Process Sequence	W/Pos' &Dir't	Voltage Speed	Ampere W.C/Dia	Approved Class									
												ABS	DNV	LR	KR	NK	GL	BV	RINA		
1	FCAW	FC-01	SW-FC 001	SW-QFC001 1G/2G/3G	DH36	12mm	3~24	Multi 1 Side	1G 2G 3G	27-34	270-340	WPS	O	O	O	O	O	O	O	FINAL WPS APPROVED	
					20-45					1.2/1.4	PQR	O	O	O	O	O	O				
2	FCAW	FC-02	SW-FC 002	SW-QFC002 2G/3G	EH36	12mm	3~24	Multi 1 Side	1G 2G 3G	19-33	128-286	WPS	O	O	-	-	-	-	-	FINAL WPS APPROVED	
					9-52					1.2/1.4	PQR	O	O	-	-	-	-	-			
3	SAW	SA-01	SW-SA 001	SW-QSA-001 1G	DH36	10mm	6~11	Both Side 1 Run	1G	30-32	630-690	WPS	O	O	-	-	-	-	-	FINAL WPS APPROVED	
					39-42					1.6/4.8	PQR	O	O	-	-	-	-	-			
4	SAW	SA-02	SW-SA 002	SW-QSA-002 1G	DH36	15mm	10~16	Both Side 1 Run	1G	26-40	570-900	WPS	-	O	-	O	-	-	-	FINAL서류제 출	
					28-55					1.6/4.8	PQR	-	O	-	O	-	-	-			
5	FCAW	FC-03	SW-FC-003	SW-QFC-003 2G/3G	EH47	50mm	25~100	Multi 1 Side	1G 2G 3G	26-41	270-340	WPS	-	-	O	-	-	-	-	MI 완료 11/18 용접	
					28-56					1.2/1.4	PQR	-	-	O	-	-	-	-			
6	FCAW	FC-04	SW-FC-004	SW-QFC-004 2G/3G	DH36	40mm	20~80	Multi 1 Side	1G 2G 3G	26-41	270-340	WPS	-	-	O	-	-	-	-	MI 완료 11/18 용접	
					28-56					1.2/1.4	PQR	-	-	O	-	-	-	-			
7	SAW	SA-03	SW-SA003	SW-QSA-003 1G	DH36	30mm	15~60	1 Single Side Multi	1G	26-42	570-902	WPS	-	-	O	-	-	-	-	MI 완료 11/18 용접	
					28-57					1.6/4.8	PQR	-	-	O	-	-	-	-			

